

8065 WebServer Addendum

A.1 INTRODUCTION

An internal webserver capability has been added to the 8065 firmware with the revision 10 firmware. This addendum provides the 8065's webserver specifications and directions for configuring an ICS 8065 Ethernet-to-GPIB Controller from any computer by using a standard web browser. Older 8065s can be updated by downloading a 8065 Update Program from ICS's Website.

A.2 SPECIFICATIONS

The following specifications are added to Section 1 of the 8065 Manual.

A.2.1 HTML Pages

The standard HTML pages conform to HTML version 4.01 or XHTML version 1.0. The required pages are needed for correct WebServer operation. User can redefine the other page names or add additional pages. The WebServer serves the stored pages after substituting values for the variable placeholders. The standard 8065 pages are:

404.html	404 Error Page (required page)
501.html	501 Error Page (required page)
index.html	Welcome Page (required page)
config.html	Configuration Page
confirm.html	Confirmation Page
reboot.html	Reboot Page

A.2.2 Graphics

Image files with .jpg or .gif extensions are served as graphics

A.2.3 User Configurability

The user can replace the standard HTML pages and image files with modified pages or add additional pages and images to the card. User is responsible for assuring that any substituted HTML pages conform to HTML version 4.01 or XHTML version 1.0. Guidelines for modifying the pages are described in Application Bulletin AB80-5.

File types supported	.html, .gif and .jpg
Number of files	32 maximum
File size	63 kbytes maximum for all files 32 kbytes maximum for a single file
File name size	27 characters

A.3 WEB BROWSER CONFIGURATION METHOD

The following directions are added to Section 2 of the 8065 manual.

The Web Browser method uses a standard browser such as Firefox, Internet Explorer or Netscape to view and change the current network settings.

1. Connect the 8065 directly to the computer running the browser. Temporarily disconnect the computer from the company network and use the supplied Ethernet Crossover Cable to connect the computer to the card as shown in Figure 2-1. This will eliminate any potential network conflicts while configuring the card.

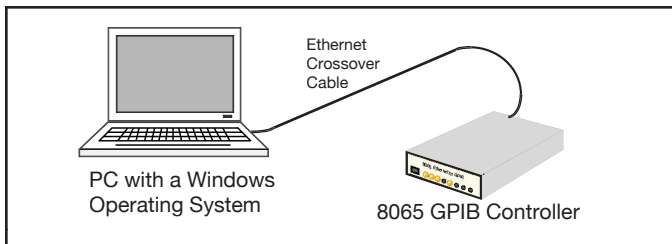


Figure 2-1 8065 Connected to computer with a Crossover Cable

An alternate connection is to use a standard Ethernet Cable to connect the card to the same hub or switch that the computer running the browser is connected to as shown in Figure 2-2. CAUTION: Temporarily disconnect the local network connection to avoid network conflicts until the card is configured.

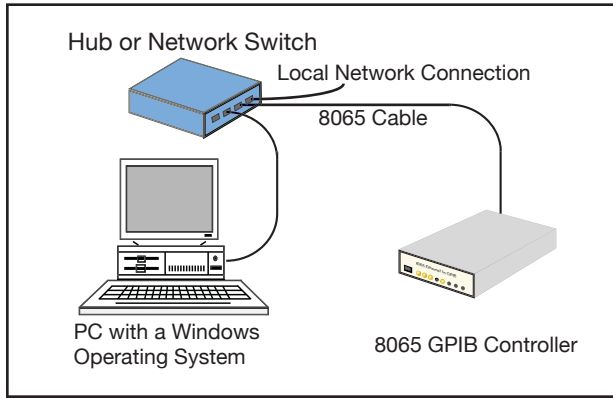


Figure 2-2 8065 Connected to the local hub

- 2 Apply power to the card and verify that it passes its selftest routine and that the PWR, RDY and LAN LEDs are on.
- 3 Check your computer's network settings to be sure its IP address is in the 192.168.0.xxx range so it can communicate with the card's default IP address. If it is not, it must be set before proceeding. Use the values shown below. For Windows PCs, right-click on My Network Places and click on Properties. Right-click on Local Area Connection and click Properties. Highlight Internet Protocol (TCP/IP) and click Properties. If your PC's IP address is in a different range, record the current settings and temporarily set the following network values:

Check	'Use the following IP Address'
IP Address	192.168.0.2
Subnet mask	255.255.255.0
4. Open the browser and enter the default IP address of 192.168.0.254 for new units (or your last set address for older units) in the browser address window.
5. A Welcome Page similar to the one shown Figure 2-3 should appear in your browser.



6. If you want to change any of the settings, press the ‘Update Configuration’ button. A Configuration Page similar to the one shown in Figure 2-4 should appear in your browser.

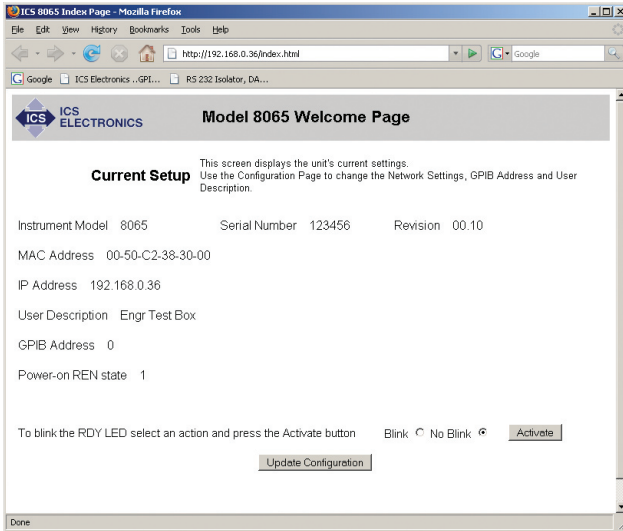


Figure 2-3 8065 Welcome Page

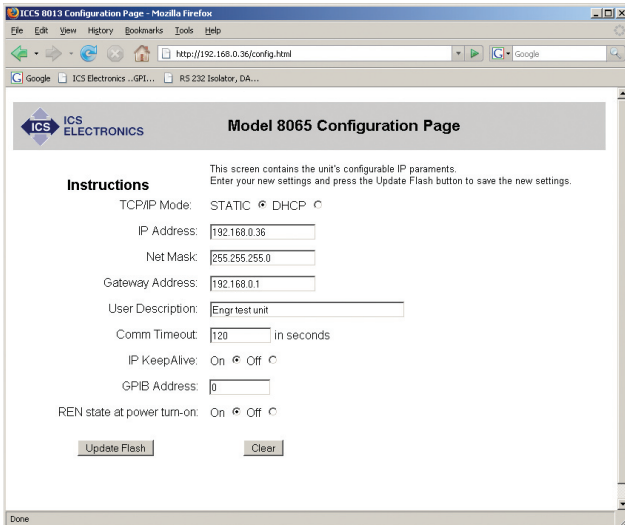


Figure 2-4 8065 Configuration Page

A

7. Enter the new settings as desired. If you select DHCP for the TCP/IP Mode, the page blanks out the IP, Net and Gateway addresses as they will be supplied by your DHCP server. Check the entered values carefully as the unit's webserver does minimal error checking. Press the 'Update Flash' button when done. A Confirmation Page similar to the one shown in Figure 2-5 will appear in your browser.

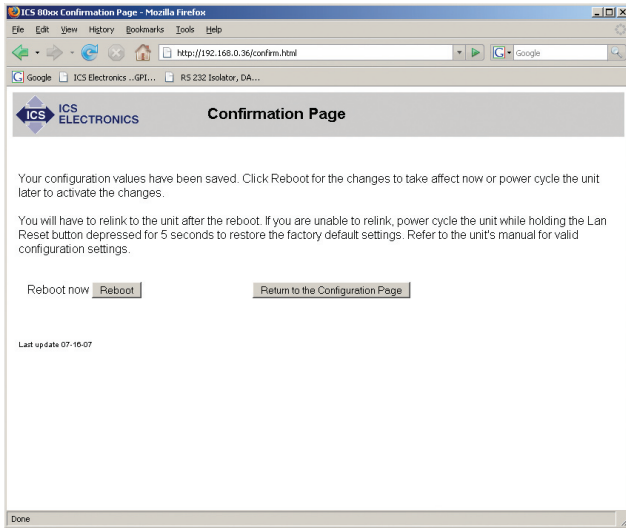


Figure 2-5 8065 Confirmation Page

8. Your new settings have been saved in the board's flash memory. You have to reboot the unit or power cycle it for the changes to take affect. Press the 'Reboot' button to reboot the unit now or the 'Return to the Configuration Page' button to revisit the new settings. A Rebooting Page similar to the one shown in Figure 2-6 will appear in your browser. If you changed the 8065's IP address, you will have to relink to it at its new value. If you set the IP Address to DHCP, you can use the VXI-11 keyboard program to scan for the unit and find its new IP setting.



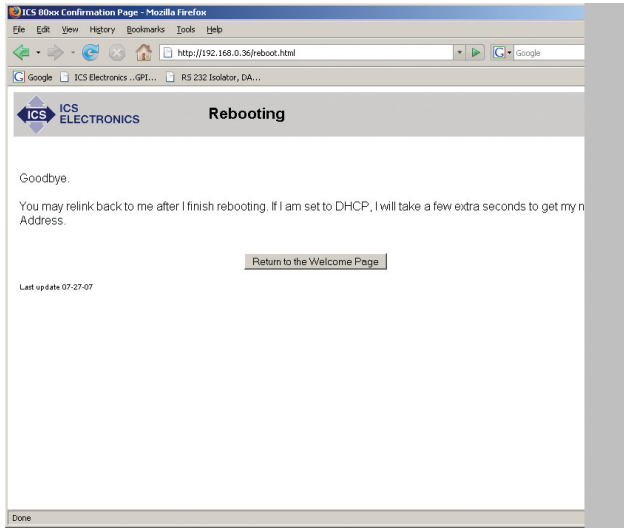


Figure 2-6 Rebooting Page