

VXI C-Size Bare PC Board

DESCRIPTION

ICS's 115250 is a blank C-Size Board for mounting various devices in a VXI module format. The 115250 includes the P1 and P2 connectors, filtering capacitors and power pads for all of the VXIbus voltages. Pads are also provided for all of the VXIbus signals. This makes it easy to mount, connect and power all types of devices in a C-size module.

A choice of optional VXI hardware shield kits lets the user enclose the assembled board and make one, two or three-slot wide c-size modules. A two-slot wide kit is available with the board on the right hand side to accommodate wire-wrap tails or components that need more room on the 'circuit-side' of the module.

Each hardware kit includes the side shields, front panel, and all hardware to finish the module.

Front Panel Access

The 115250 Blank Board includes pad patterns along the front edge for mounting connectors, LEDs and a reset button. The front connector pad patterns can accommodate a 96-pin DIN connector and a 9 to 37-pin D-sub connector. The LED circuit traces can accommodate up to four miniature LEDs, their series resistor and a subminiature reset button.

Design Aids

ICS has prepared ORCAD schematic templates and CAD design files for the 115250 Blank Board which can be used as the starting point for your circuit schematic or to make a machining drawing for your front panel. These files simplify your design effort by having all of the necessary layout work already done for you. The files are in ORCAD and Autocad .dxf file formats. Contact customer service or your local sales representative to request your copy of the files.

- C-Size blank PC Board for mounting devices, modules or circuits.
C-size VXIbus board.
- Connection Pads for all VXI voltages and signals.
All signals for any use.
- Includes pad patterns for front panel connectors, LEDs, and a Reset Switch.
Easy front panel access when needed.
- CAD Design aids for Schematic Capture, PC board layout and front panel machining.
Speeds up your design.
- Optional VXI Hardware Kits with shields, front panel & hardware to fabricate a complete module.
Builds 1, 2 and 3-slot wide kits.

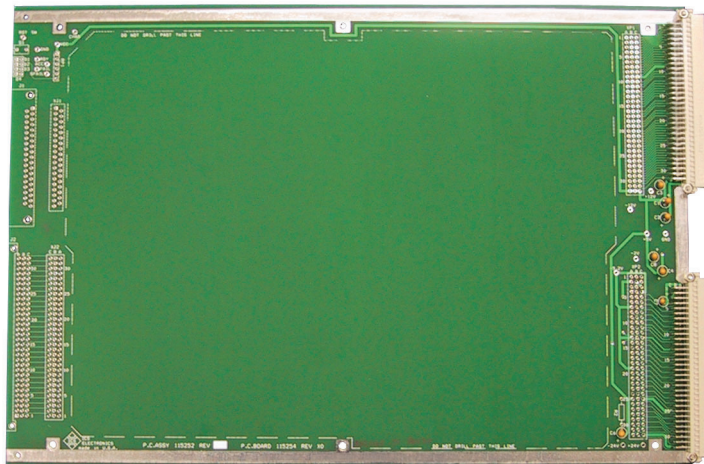


Figure 1 115250 VXI C-Size Bare Board



7034 Commerce Circle
Pleasanton, CA 94588
Phone: 925.416.1000
Fax: 925.416.0105
Web: www.icselect.com

SPECIFICATIONS

VXI Specifications

None

Physical

Size

C-Size module board

PCB - 13.486 in L x 9.187 in W x 0.063 in Thick
(342.5 mm L x 233.3 mm W x 1.59 mm Thick)

Component height 0.48 inches max

Weight

0.3 kg. (0.75 lbs.)

Power Consumption

None

Included Items

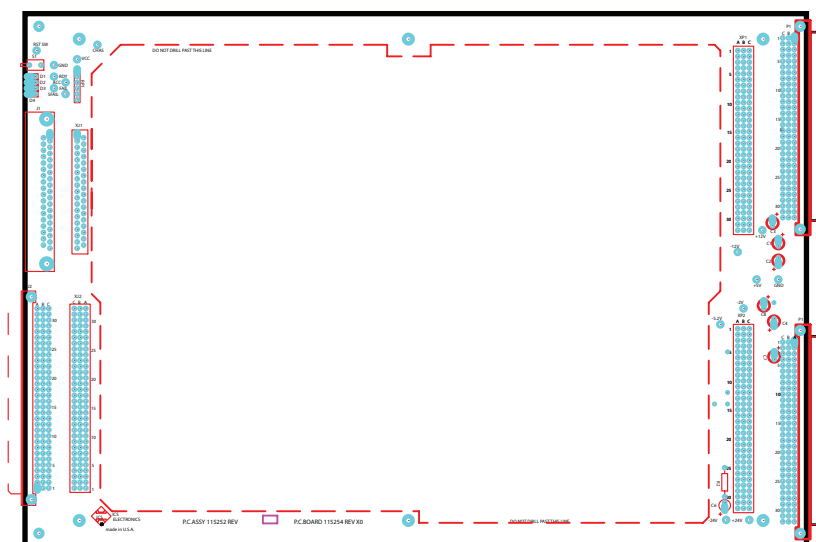
115250 Bare Board Assembly with P1 and P2 connectors and power filtering capacitors.

Documentation includes PCB schematic, PCB layout and a suggested front panel machining drawing if the front edge connectors and/or LEDs are installed.

Support CD with Schematic and CAD layout drawing files

Table 1 Component Clearance

Mating VXI-Kit Part Numbers	VXI Slots	Component Clearance	
		Circuit Side	Component Side
114341	1	0.226 in	0.769in
114343	2	0.226	1.969
114342	2	1.426	0.769
114750	3	0.226	3.169



ORDERING INFORMATION

	Part Number
VXI C-Size Bare Board with documentation package	115250
VXI Hardware Shield Kit, single-slot wide	114341
VXI Hardware Shield Kit, two-slot wide	114343
VXI Hardware Shield Kit, two-slot wide with extra space on the circuit side	114342
VXI Hardware Shield Kit, three-slot wide	114750