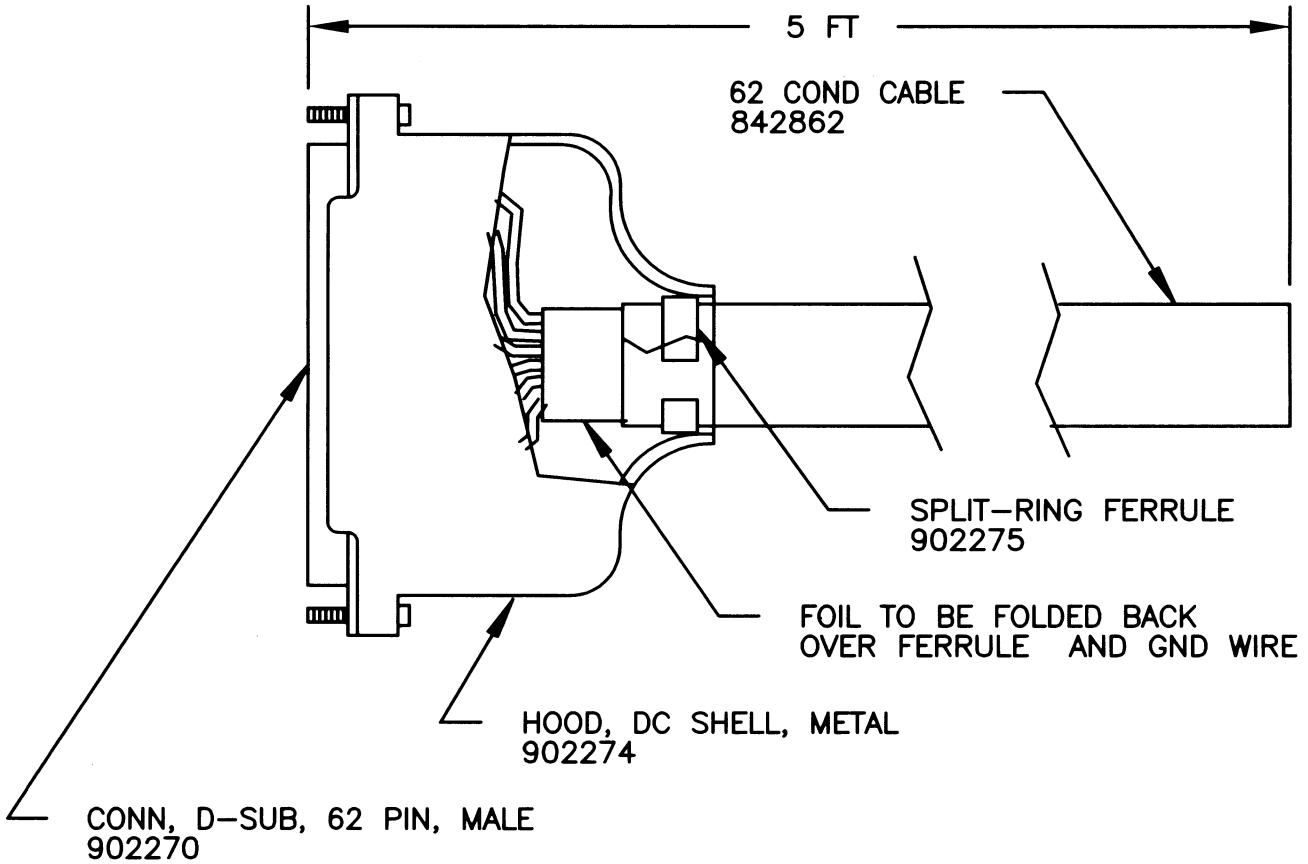


APPLICATIONS

REVISIONS

NEXT ASSY	USED ON	LTR	DESCRIPTION	DATE	APVL
		X1	REDWN WITH 62 COND CABLE AMO	DEC97	GM
		0	ADD NOTE TO BUILD AS 10FT, 2 ENDED CABLE AMO	FEB00	GM
		1	CALL OUT 1/2 OF 10 FT ASSY 114714 AMO	APR01	GM
		2	REVISE WIRE COLORS AMO	FEB11	GM
		3	CLARIFY GRN ON PINS 35-37 & 39 AMO	MAR12	



NOTES:

- BEGIN ASSEMBLY WITH INSIDE ROW, PINS 22-42.
- MAKE FROM P/N 114714. ICS TO CUT CABLES AS NEEDED.
- USE SHEET 3 WHEN WIRING NEW CABLES.



DRAWN *[Signature]* 19 MAR 12

CHECKED

APPROVED *[Signature]* 3-14-12

MATERIAL

ASSY - CABLE  
OPEN-END, 4863

TOLERANCES  
DECIMALS .X = .1  
.XX = .030  
.XXX = .010  
ANGLES +0° 30'  
DIMENSIONS ARE IN INCHES

A	58558	114508	REV 3
SCALE		SHEET 1	OF 3

APPLICATIONS

REVISIONS

NEXT ASSY

USED ON

LTR

DESCRIPTION

DATE

APVL

OBSOLETE BELDEN CABLE

PIN NO	SIGNAL	WIRE COLOR
1	VCC	RED
2	STROBE	BLK
3	RESET	WHT
4	STAT A	BLK
5	CH 46	GRN
6	CH 43	BLK
7	CH 40	BLU
8	CH 37	BLK
9	CH 34	YEL
10	CH 31	BLK
11	CH 28	BRN
12	CH 25	BLK
13	CH 22	ORG
14	CH 19	BLK
15	CH 16	WHT
16	CH 13	RED
17	CH 10	GRN
18	CH 7	RED
19	CH 4	BLU
20	CH 1	RED
21	SHIELD	YEL
22	GND	RED
23	CLEAR	BRN
24	TRIGGER	RED
25	EDR	ORG
26	CH 47	RED
27	CH 44	WHT
28	CH 41	GRN
29	CH 38	BLU
30	CH 35	GRN

PIN NO	SIGNAL	WIRE COLOR
31	CH 32	YEL
32	CH 29	GRN
33	CH 26	BRN
34	CH 23	GRN
35	CH 20	ORG
36	CH 17	GRN
37	CH 14	BLU
38	CH 11	WHT
39	CH 8	YEL
40	CH 5	WHT
41	CH 2	BRN
42	RET	WHT
43	REMOTE	ORG
44	STAT B	WHT
45	INH	YEL
46	CH 48	BLU
47	CH 45	BRN
48	CH 42	BLU
49	CH 39	ORG
50	CH 36	BLU
51	CH 33	YEL
52	CH 30	BRN
53	CH 27	ORG
54	CH 24	BRN
55	CH 21	YEL
56	CH 18	ORG
57	CH 15	ORG
58	CH 12	VIO
59	CH 9	RED
60	CH 6	VIO
61	CH 3	WHT
62	+12V	VIO



DRAWN

CHECKED

APPROVED

MATERIAL

ASSY - CABLE  
OPEN-END, 4863

TOLERANCES  
DECIMALS .X = .1  
.XX = .030  
.XXX = .010  
ANGLES +0° 30'  
DIMENSIONS ARE IN INCHES

A

58558

114508

REV  
3

SCALE

SHEET 2 OF 3

APPLICATIONS

REVISIONS

NEXT ASSY

USED ON

LTR

DESCRIPTION

DATE

APVL

PIN NO SIGNAL WIRE COLOR

1	VCC	RED
2	STROBE	RED/BLK
3	RESET	ORG
4	STAT A	ORG/BLK
5	CH 46	YEL
6	CH 43	YEL/BLK
7	CH 40	GRN
8	CH 37	GRN/BLK
9	CH 34	LT BLU
10	CH 31	LT BLU/BLK
11	CH 28	GRY
12	CH 25	GRY/BLK
13	CH 22	WHT
14	CH 19	WHT/BLK
15	CH 16	PNK
16	CH 13	PNK/BLK
17	CH 10	BLK
18	CH 7	WHT/BLK
19	CH 4	BRN
20	CH 1	BRN/WHT
21	SHIELD	BLU
22	GND	BLU/WHT
23	CLEAR	VIO
24	TRIGGER	VIO/WHT
25	EDR	WHT/RED
26	CH 47	WHT/BLU
27	CH 44	WHT/YEL
28	CH 41	WHT/GRN
29	CH 38	GRY/YEL
30	CH 35	GRY/GRN

PIN NO SIGNAL WIRE COLOR

31	CH 32	YEL/WHT
32	CH 29	ORG/WHT
33	CH 26	YEL/RED
34	CH 23	YEL/BLU
35	CH 20	GRN
36	CH 17	GRN/YEL
37	CH 14	GRN
38	CH 11	GRN/RED
39	CH 8	GRN
40	CH 5	GRN/WHT
41	CH 2	RED/BLU
42	RET	RED/WHT
43	REMOTE	VIO/YEL
44	STAT B	GRY/WHT
45	INH	PNK/RED
46	CH 48	PNK/BLU
47	CH 45	ORG/GRN
48	CH 42	YEL/GRN
49	CH 39	PNK/YEL
50	CH 36	PNK/WHT
51	CH 33	LT BLU/WHT
52	CH 30	LT GRN/WHT
53	CH 27	LT GRN
54	CH 24	LT GRN/BLK
55	CH 21	LT BLU/RED
56	CH 18	LT BLU/BLU
57	CH 15	LT BLU/YEL
58	CH 12	LT BLU/GRN
59	CH 9	VIO/GRN
60	CH 6	PNK/GRN
61	CH 3	GRY/RED
62	+12V	GRY/BLU



DRAWN

CHECKED

APPROVED

MATERIAL

ASSY - CABLE  
OPEN-END, 4863

TOLERANCES  
DECIMALS .X = .1  
.XX = .010  
.XXX = .005  
ANGLES +0° 30'  
DIMENSIONS ARE IN INCHES

A

58558

114508

REV  
3

SCALE

SHEET 3 OF 3